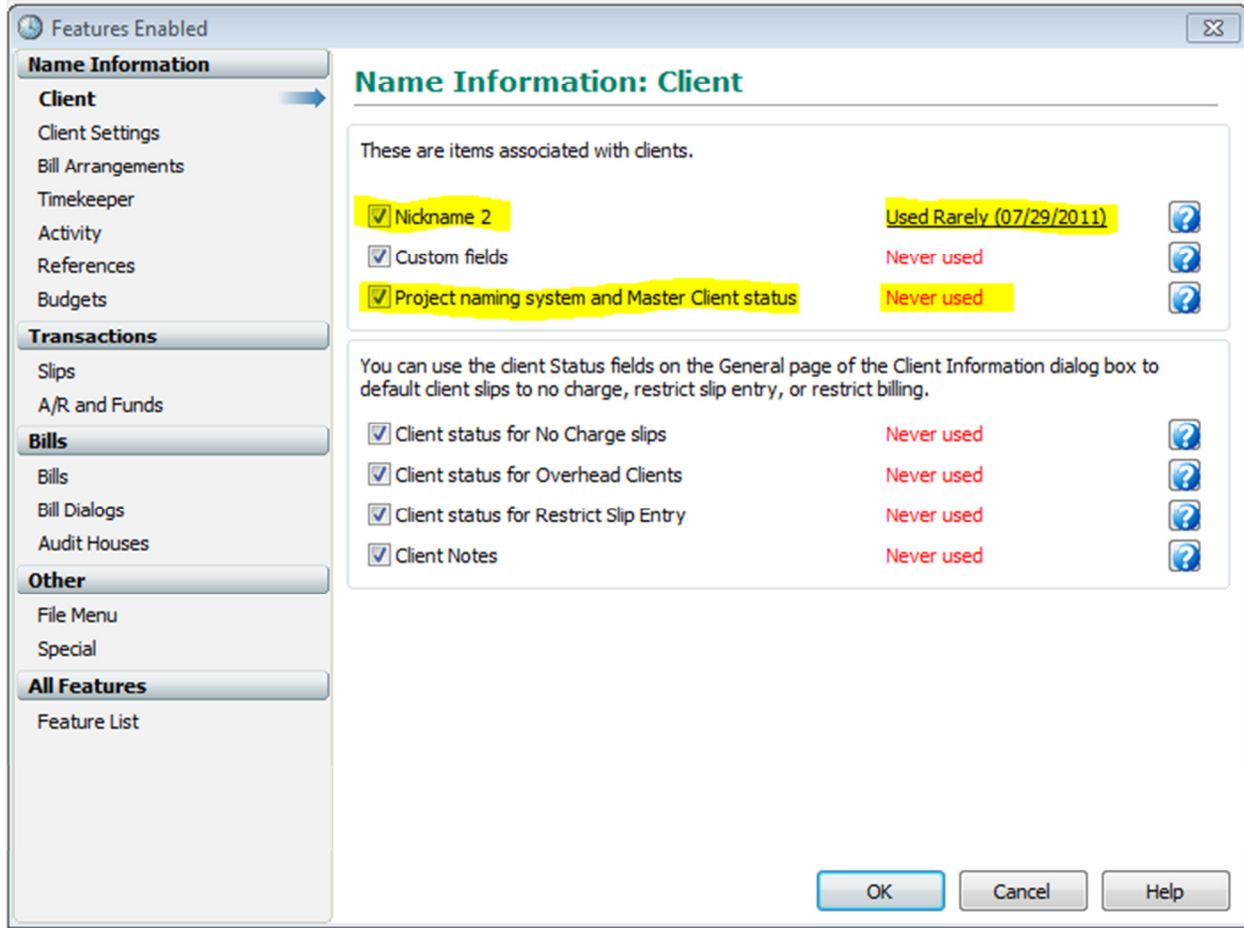


# What's New and Improved in Timeslips 2012?

## Settings: Features Enabled User Interface has been enhanced

The features enabled dialog box has been updated to provide easier access to groups of features in the program. The navigation bar on the left presents data more clearly and allows users to easily enable or disable program features.



Users can also click on the link to the right of a feature to review how often (and when) a feature has been used to better evaluate features that can be disabled. In addition, multiple features can be selected to be enabled or disabled at the same time!

